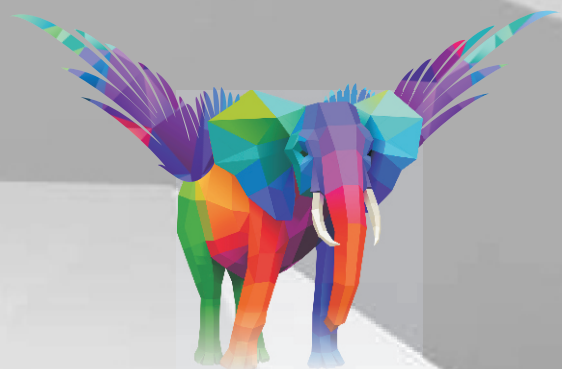


MAKING YOUR
IMAGINATION
FLY



sharon
PRELAM





DESIGNER'S PARADISE

Enhance your home or office interior with colours and textures of **sharon** Prelam Particle Boards. Browse through our collection here to fire up your creativity.

sharon Ply has been at the fore front of innovation in Plywood Technology, since its inception in 1987. The first Indian plywood manufacturer to receive ISO: 9002 & also ISO: 14001 certifications. **sharon** Ply has the unique distinction of being the only manufacturer to have exported plywood to Japan.

In addition to Prelam Particle Boards, **sharon** Ply's portfolio includes Marine Grade Plywood, Commercial Plywood and Flexible Plywood. **sharon** Ply is also the leader in Decorative Veneers, Doors, and Block boards.

The manufacturing units at Chennai, Guwahati, Roorkee, Karnal, Kandla, Myanmar, Hoshiarpur and Laos are also centers of best practices, conforming to the highest norms of quality. The organization is committed to ensure that its customers and dealers are not just satisfied but delighted.



APPLICATION

FURNITURE & INTERIORS

Cabinets, Wardrobes, Wall Units, Storage Units.

Cash Counters, Laboratory Tables, Filing Units.

Work – Stations, School Furniture.

Beds, Dressing Tables, TV Trolleys, Centre Tables, Shoe Racks.

Notice Boards, Chalk Boards, Magnetic Boards.

Partitions, Wall Panelling, Wall Cladding, Column Encasing.

Panel Doors and Flush Doors.

False Ceiling.

NON – FURNITURE

Speaker Boxes.

Sewing Machine Tops.

Table Tennis Table Surfaces.

UNIQUE POINTS

Matching post-forming laminates available

A wide range of shades in pastels and wood grains

Excellent Machinability

Borer & Termite Resistant

Resistant to fungus and stains

High screw holding strength & load bearing capacity

Free from warping & surface defects

Environment- friendly product

Silver Nano Technology reduces microbial growth on the surface by 99.9%

High surface resistance to steam and heat



3524 - Decent Walnut



655 - Lyon Walnut



656 - Columbia Walnut



657 - Marine Walnut







3666 - Sandy Saw Line



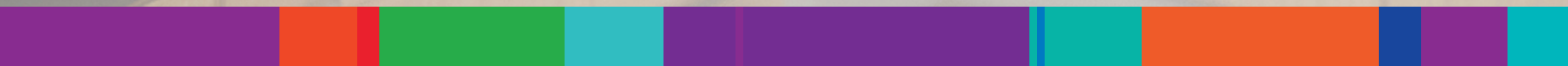
3667 - Chocolate Saw Line

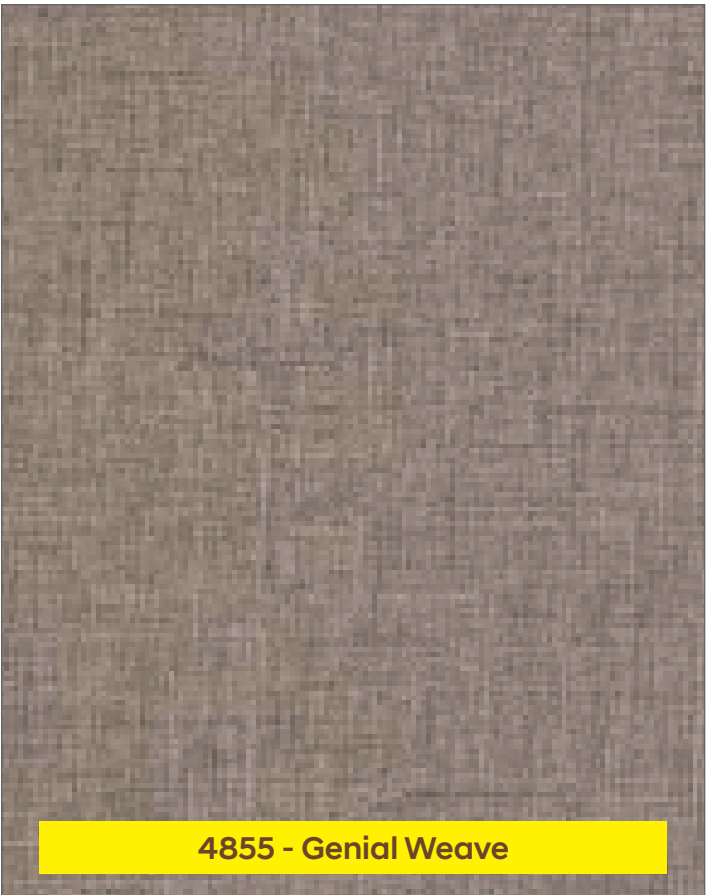


4861 - Brila Weave



4854 - Brilliant Weave





4855 - Genial Weave



859 - Magic Beans



3661 - Sonoma Oak



3662 - Napa Oak





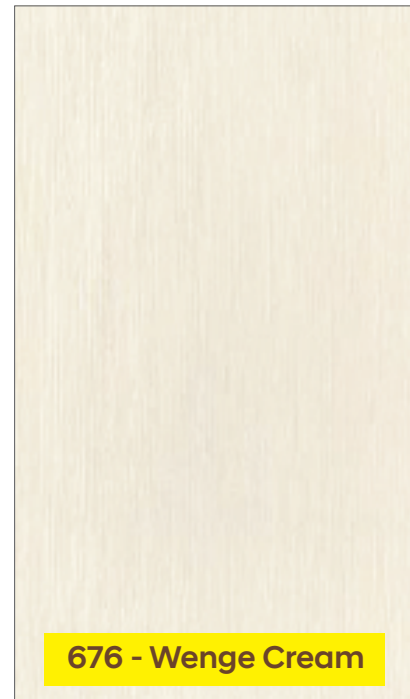
4535 - Snow Pine



4536 - Smoked Pine



675 - Wenge Brew



676 - Wenge Cream



4663 - Valley Oak



4662 - Blocked Oak





3722 - Brown Prapila



3721 - Grey Prapila



683 - Astronium Wood



3438 - Natural Ebony



706 - Acacia



3707 - Maldau Acacia





311- Bavarian Beech



323 - Intal Beech



3324 - Mangfall Beech



3376 - Oxford Cherry



3541 - Sapeli



473 - Khaya Mahogany





3793 - Flowery Wenge



3345 - Wyoming Maple



3525 - Fusion Maple



357 - Thansau Maple



4446 - Nayana Teak



4447 - Urban Teak





456 - Samoa Teak



3532 - Highland Pine



483 - Douglas Pine



469 - Natural Mahogany



4427 - Cairo Walnut

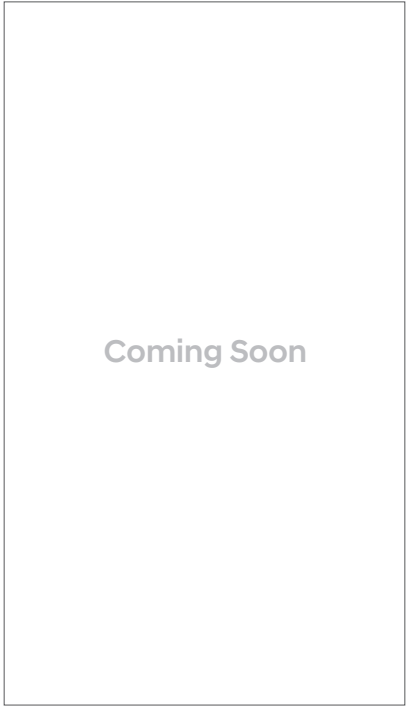
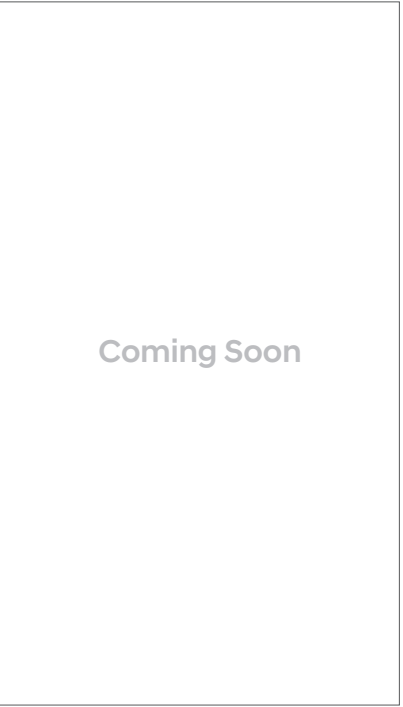
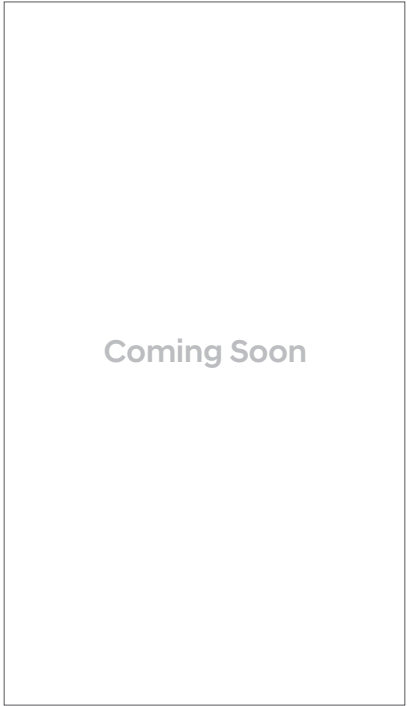


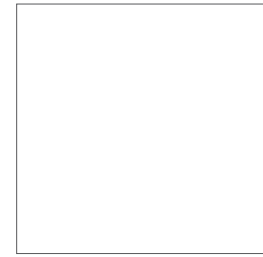
4429 - Classic Planked Walnut



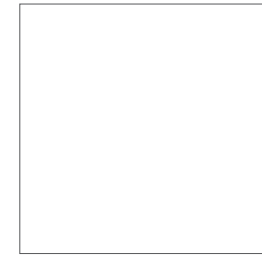


3523 - Classic Walnut

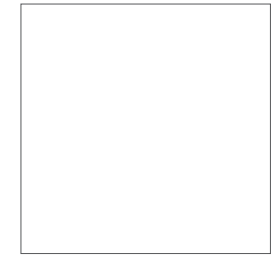




106 - Snow White



118 - Off White



111 - Frosty White



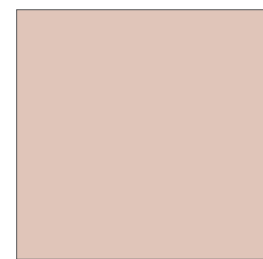
222 - Silver Grey



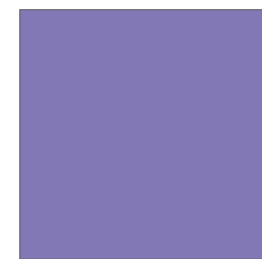
121 - Ivory



238 - Graphite Grey



163 - Beige



261 - Lavender



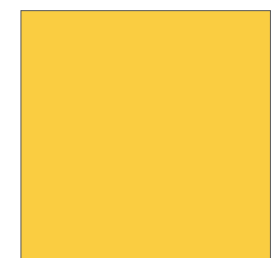
148 - Chestnut Red



195 - Blood Red



3242 - Electric Blue



3203 - Yellow



219 - Mandarin Garnet



289 - Bloom Green



293 - Black



TECHNICAL SPECIFICATIONS

| Properties (Physical & Mechanical) | Specified as per IS 12823 : 1990 | Sharon Pre-Lam Particle Board |
|---|---|-------------------------------|
| Length (mm) | 2440 + 06/-0 | 2440 |
| Width (mm) | 1830 + 03/-0 | 1830 |
| Thickness (mm) | 18± 5% | 18.13 |
| Straightness / Metre | 2 mm | 0.3 mm |
| Squareness / Metre | 2 mm | 0.4 mm |
| Appearance | No A,B,C defects | Defect - free |
| Density Kg / m ³ | 500 - 900 | 650 |
| Density Variation (Max) | ± 10% | 8% |
| Water Absorption a. 2 hours (Max) b. 24 hours (Max) | 15% 30% | 9% 24% |
| Thickness Swelling, 2 hours (Max) | 8% | 6.5% |
| Modulus of Rupture (MoR) N/mm ² (min), Average | 11 | 15.5 |
| Modulus of Elasticity (MoE) N/mm ² (min), Average | 2500 | 2600 |
| Tensile Strength Perpendicular to surface (Min), N/mm ² | 0.3 | 0.45 |
| Screw Withdrawl Strength (Min), N a. Face b. Edge | 1250 750 | 1300 900 |
| Moisture Content | 5-15% | 7.5% |
| Abrasion Resistance Minimum Revolutions | 450 | 475 |
| Resistance to Steam | Shall not show any sign of blister, delamination or change in surface finish. | Conforms |
| Crack Resistance | Shall not show any sign of cracks or delamination | Conforms |
| Resistance to Cigarette Burns | Shall not leave any mark or stain | Conforms |
| Resistance to Stains | Shall not leave any mark or stain | Conforms |

AVAILABILITY

| Product | Finish | Size | Thickness |
|---|--------------|--|---|
| Plain Particle Board/ Plain HMR Particle Board | NA | 9'x6' (2750 mm x 1830 mm) 8'x6' (2440 mm x 1830 mm) | 9 mm, 11mm, 12 mm, 15 mm, 17 mm, 18 mm and 25 mm |
| Pre-Lam Particle Board/ Pre-Lam HMR Particle Board | Suede & Matt | 9'x6' (2750 mm x 1830 mm) 8'x6' (2440 mm x 1830 mm) | 9 mm, 11mm, 12 mm, 15 mm, 17 mm, 18 mm and 25 mm |

CERTIFICATIONS

| | | | |
|---|--|---|---|
| <p>PLB 22 IS: 12823</p>  <p>CM/L-6700004109</p> | <p>PPB 22 IS: 3087</p>  <p>CM/L-6700053114</p> |  <p>Indian Green Building Council MEMBER</p> |  <p>SILVER NANO Eco-friendly Technology for Fungus and Bacteria Resistant Particle Boards</p> |
|---|--|---|---|



#iamstrongest

#60, Sriman Srinivasan Road, Alwarpet, Chennai - 600 018.
Phone: 044 - 3940 3950, 2434 5260 | Fax: 044 - 2434 6216
admin@sharonply.com | www.sharonply.com

Toll Free: 1800-200-3949

[f /SHARONPLYWOODSOFFICIAL](#) [v /SHARONPLY](#) [i @SHARONPLYINDIA](#) [t @SHARONPLYINDIA](#)