

# Checklist for Moving into your **NEW HOME**



Brought to you by



**Sharon GOLD** Congratulates you on moving into a brand-new home! This is a moment of joy, a new chapter filled with endless possibilities, and the start of countless beautiful memories.

While this is an exciting time, there are a few things to be mindful about to ensure harmony and safety in your new home. Following is a comprehensive checklist to guide you through this journey.

# ESSENTIALS TO CARRY ON YOUR FIRST DAY



## Basic Tools:

- Electric tester
- Torch
- Kitchen gas lighter
- Candles
- Matchbox

## First-Aid Supplies:

- Band-aid
- Antiseptic wash
- Antiseptic cream
- Burn cream
- Cotton
- A roll of bandage
- Thermometer
- Headache balm
- Pain balm / Spray

## Other Supplies:

- Masks
- Insect repellent
- Mosquito repellent
- Room spray
- Scissors
- Screwdriver set
- Duct tape
- Relevant materials like photos, books, lamps, candles, flowers and other prayer items if religious.

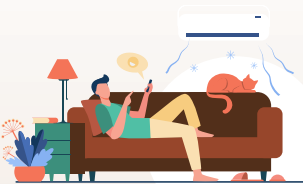
## 1. ELECTRICAL

- **Safety Testing:** Switch on the water heater in the bathroom and use the electric tester on bathroom taps and on any exposed metal surfaces like junction boxes to detect leaks or faulty grounding.
- **MCB Identification:** Identify which Miniature Circuit Breaker (MCB) controls each room or appliance. Label them clearly and place a sticker near the distribution box for quick reference.
- **Lighting & Appliances:** Check every light, fan, and electrical appliance to ensure they are functioning correctly. Use the tester first on metal surfaces.
- **Backup Power:** Test the generator or inverter connection (if available) and understand how to switch it on in case of a power outage.
- **Sockets and Switches:** Check and ensure all sockets and switches are properly installed and functional. Replace or repair any faulty ones.



## 2. AIR QUALITY

- **Ventilation:** Freshly painted walls and new interiors may release formaldehyde or other volatile organic compounds (VOCs). Open all windows and run fans to ventilate the space adequately.
- **Air Purifiers:** Consider using air purifiers for better indoor air quality, especially if you have children or individuals with respiratory sensitivities.
- **Curtains and Upholstery:** Air out new curtains, rugs, or upholstered furniture to reduce any chemical odours.



### 3. PLUMBING

- **Plumbing Diagram:** Obtain a copy of the plumbing diagram for your apartment.
- **Main Valves:** Identify the location of the main water valve in your apartment or on the terrace. Ensure you know how to shut it off in case of emergencies, such as a broken tap.
- **Leak Checks:** Inspect all taps, faucets, and shower-heads for leaks or improper installation.
- **Drainage:** Ensure that all drains are unclogged and functioning properly.
- **Water Quality:** Test the water quality and install filters if necessary.



### 4. SAFETY

- **Child-Proofing:** Secure sharp edges, electrical outlets, and hazardous areas if you have children. Install safety gates if needed.
- **Pet-Proofing:** Check for loose wires, sharp objects, or open areas that could be harmful to pets.

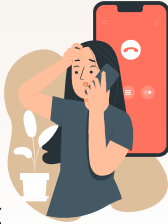


- **Balcony and Terrace:** Ensure railings are high and sturdy enough to prevent accidents.
- **Fire Safety:** Locate fire extinguishers, smoke detectors, and emergency exits. Install additional safety measures if required.
- **Locks:** Change or rekey all locks, including the main door and balcony doors, for enhanced security.

## 5. EMERGENCY & ESSENTIAL CONTACTS

**Emergency Numbers:** Compile a list of essential contacts including nearby emergency numbers, such as:

- Your close relatives or friends
- Your office, school, etc.,
- Doctors
- Hospitals
- Police
- Fire Department
- Electricity Board
- Plumber and Electrician
- Milk Supplier
- Newspaper Supplier
- Grocery Supplier



Write down these and put them up on the fridge or behind the main door for a few weeks.

- **Neighbours and Association Officials:** Get the contact details of your neighbours and apartment association members. Especially that of security personnel.

## 6. CLEANING & MAINTENANCE

- **Deep Cleaning:** Perform a thorough cleaning of the entire apartment before moving in.
- **Pest Control:** Consider pest control treatment to address potential infestations.
- **Maintenance Checklist:** Note any damages or maintenance issues and report them to the property manager or landlord.



## 7. STORAGE & ORGANISATION

- **Storage Areas:** Identify storage spaces and plan the arrangement of items to avoid clutter.
- **Utility Areas:** Organise utility spaces such as the kitchen, pantry, and laundry area for efficient use.



## 8. MISCELLANEOUS

- **Appliance Manuals:** Collect and review manuals for installed appliances to understand their operation and warranty terms.
- **Wi-Fi & Cable:** Set up internet and cable connections as needed.



- **Documentation:** Keep copies of all apartment related documents, such as agreements, receipts, and warranties, in a safe place in the apartment. Another copy can be kept at another location like a relative or a friend's house. Originals should be always safe in a bank locker.
- **Housewarming Rituals:** If culturally relevant, plan housewarming ceremonies or rituals like boiling milk for good luck and positivity.

## 9. FINAL CHECKS BEFORE MOVING IN

- **Keys:** Confirm that you have all necessary keys, including spare sets.
- **Utilities:** Ensure that all utilities (electricity, water, gas) are functioning properly.
- **Final Walkthrough:** Conduct a final walkthrough to verify that everything is in order before you move in.

## 10. THINGS TO AVOID

- **Noise:** Avoid making loud noises like driving a nail into a wall, especially during odd hours, to maintain harmony with neighbours. Don't drag furniture or any other heavy objects as it will disturb the people below.
- **Littering:** Dispose of garbage responsibly and adhere to waste segregation rules.
- **Unauthorised Alterations:** Check with the apartment association before making structural changes to your unit, like closing a balcony or dividing a room.
- **Blocking Common Areas:** Do not leave personal items like footwear, bicycles, or furniture in corridors or shared spaces.
- **Overloading Elevators:** Follow elevator guidelines to avoid mechanical failures.





# GOLD

The Gold Standard in Plywood

We hope this checklist has been helpful. If you have additional points that could assist others, suggestions for improvement, or even a word of encouragement, please don't hesitate to reach out.

You can email us at  
[help@sharonply.com](mailto:help@sharonply.com)  
or WhatsApp us at  
**+91 89255 11414**

**CUPBOARDS, COUNTERS & PARTITIONS**

**Planning to add some carpentry work  
to your new home?  
We have something exciting for you!**

**FREE DIGITAL CATALOGUE**

Request your copy, featuring a variety of cupboard styles that can seamlessly complement your interior plans. Just send us a request on the WhatsApp number above, and we'll send you the file.



**#iamstrongest**

**#iamsafest**



f @ /SHARONPLYINDIA

▶ /SHARONPLY

WWW.SHARONPLY.COM

யாண்பின் வல்மை